

# Finiture naturali (Poros Aperto)

Le tonalità delle riproduzioni fotografiche sono puramente indicative poiché essendo prodotti artigianali sono realizzati a mano. Attenzione: la finitura potrebbe risultare differente tra Rovere Materico e Rovere Liscio.

# Acabados Naturales (Poros Abierto)

*Natural wood finishes (Open Pore)*

Las tonalidades de las reproducciones fotográficas son puramente indicativas ya que son productos hechos a mano.

Atención: el acabado puede ser diferente entre el Roble Materico y el Roble Liso.

*The shade of the shots are merely approximate, since products are handmade.*

*It's worth considering that finishing could differ between Materico Oak and Smooth Oak.*



TABACCO



NEBBIA



HOLLAND ANTIK



HOLLAND GRAY



HOLLAND NATURALE



EFFETTO GREZZO



CENERE



QUARZO



ROVERE GRIGIO



NATURALE CAMEL



CARBONE



NORDICO



DARK BROWN

# Ferri

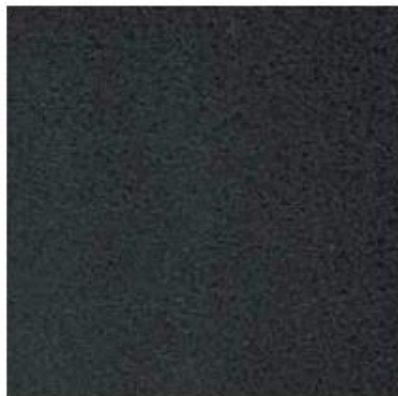
Le tonalità delle riproduzioni fotografiche sono puramente indicative poiché essendo prodotti artigianali sono realizzati a mano.

# Hierros

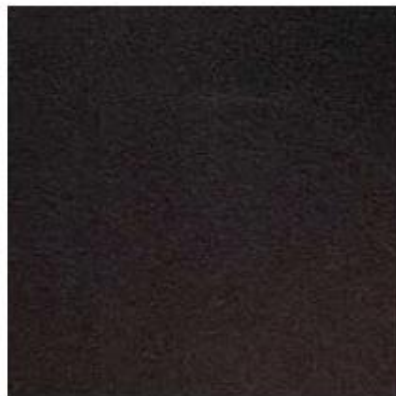
*Finishes*

Las tonalidades de las reproducciones fotográficas son puramente indicativas ya que son productos hechos a mano.

*The shade of the shots are merely approximate, since products are handmade.*



IRON SMOKE



ARKANSAS



IRON BLACK



MILK



POLVERE



BRONZO



ANTRACITE



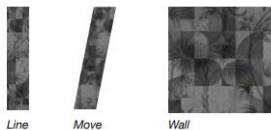
BERING SEA



ARTIC

## Gambe in vetro "MONKEY" Var. 01

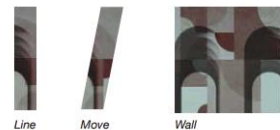
Glass legs Monkey Ver. 01



Fusion / Wall-H

## Gambe in vetro "IMPERO" Var. 03

Glass legs Impero Ver. 03



Fusion / Wall-H

## Gambe in vetro "JUNGLE SPOTS" Var. 01

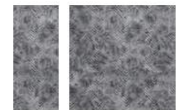
Glass legs Jungle spots Ver. 01



Fusion / Wall-H

## Gambe in vetro "ESSENTIAL" Var. 01

Glass legs Essential Ver. 01



Fusion / Wall-H

## Gambe in vetro "SPRING SMELL" Var. 01

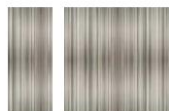
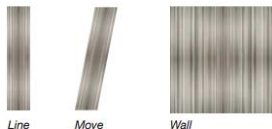
Glass legs Spring smell Ver. 01



Fusion / Wall-H

## Gambe in vetro "STRIPES" Var. 01

Glass legs Stripes



Fusion / Wall-H